

Prime

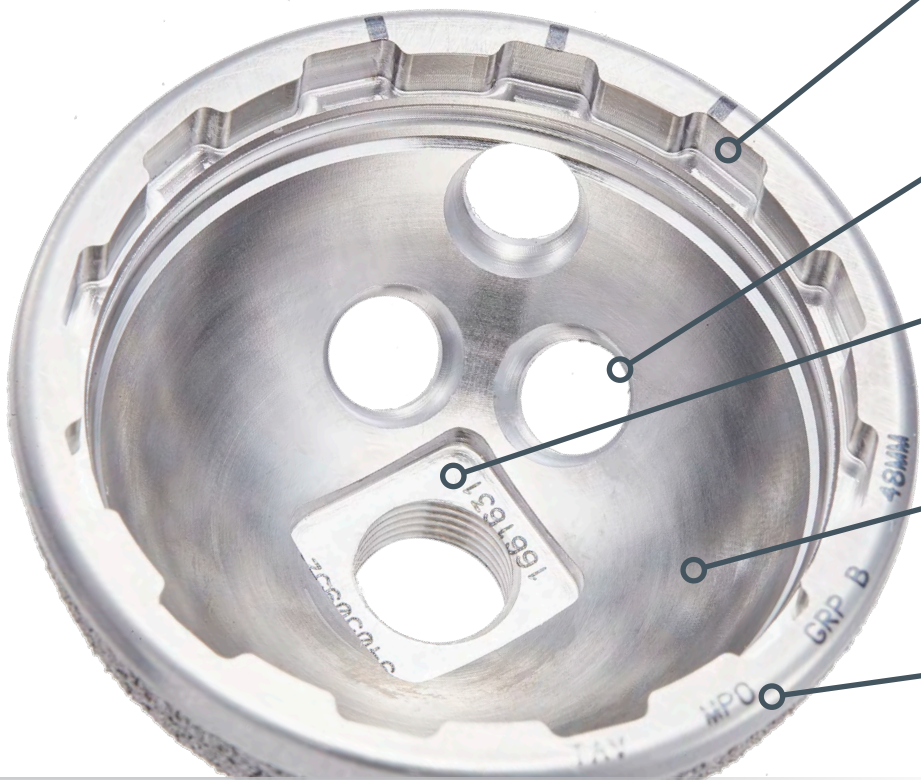
Acetabular Cup System

Brochure



Intelligent Design

The Prime Acetabular Cup System is optimized for a polyethylene bearing surface, eliminating the compromises associated with alternative bearings.



Robust Locking Mechanism

Allows for multiple liner configuration options, promotes easy liner insertion, and maximizes push-out strength

Optimized Screw Hole Locations

Create divergent fixation and allow for 18° of screw angulation

Square Impaction Dimple

Provides rotational control during implantation and functions with a quick release impactor mechanism

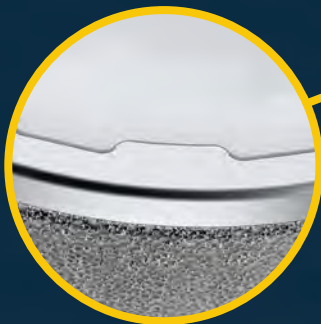
Optimized Head to Shell Ratio

Allows the use of a 36mm head and liner in a 50mm shell with no compromise to liner thickness

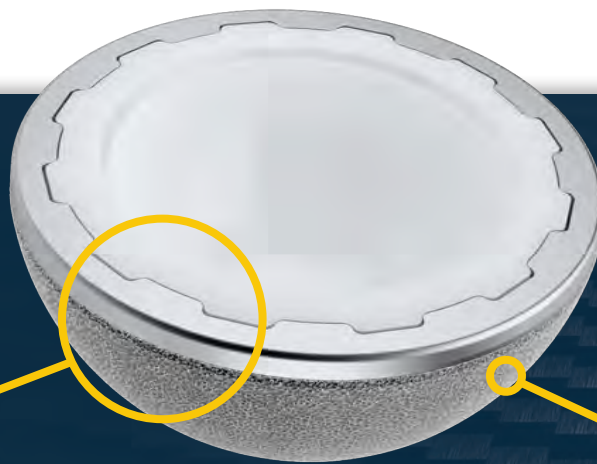
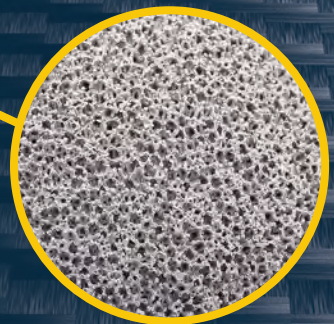
Minimized Shell Thickness

Decreases stiffness, discourages stress-shielding, and allows for optimized liner thickness

Self-Positioning Anti-Rotation Tabs create an interference fit with the liner to maximize rotational stability while allowing ease of insertion



BioFoam® Cancellous Titanium provides immediate fixation and promotes bone ingrowth



BioFoam[®] Cancellous Titanium

BioFoam[®] Cancellous Titanium provides initial implant stability, enhances bone ingrowth, and has over 8 years of clinical market history.

Initial Implant Stability

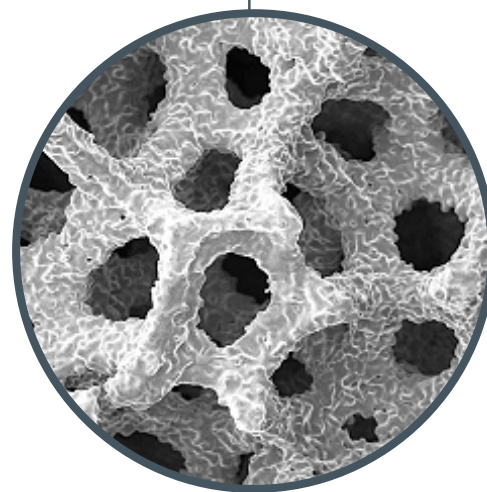
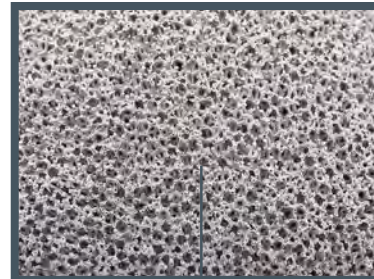
- ▶ Coarse struts bite into bone providing initial scratch-fit
- ▶ High coefficient of friction

Enhanced Biologic Ingrowth

- ▶ 60-70% porous
- ▶ Full interconnecting porosity and osteoconductive matrix promote bone ingrowth

High Compressive Strength

- ▶ Remains strong under impaction and repeated loading



100x Magnification

The Prime Acetabular Cup System is designed with simple, versatile instrumentation to support a variety of surgical approaches, including the following modern, soft tissue-sparing MicroPort surgical philosophies.

- ▶ Portal Assisted
- ▶ Direct Superior
- ▶ Direct Anterior
- ▶ Anterolateral
- ▶ Posterior



Shell, Liner, and Head Options

The Prime Acetabular Cup System offers various cup and liner options to allow intra-operative flexibility and address a wide variety of patient anatomies.



Solid



3-Hole

Available in 46 – 68mm diameters in 2mm increments



Standard



Lipped



+4mm Lateralized,
10° Face-Changing

*Available in 22, 28, 32, 36, 40,
and 44mm diameters*



Cobalt Chrome Metal



Biolog[®] Delta[®] Ceramic Head



A-Class[®]
Cobalt Chrome Metal



BCH[®] Ceramic Head



Full Function, Faster[®]

MicroPort Orthopedics Inc.
5677 Airline Road
Arlington, TN USA 38002
866 872 0211

MicroPort Orthopedics BV
Hoogoorddreef 5
1101 BA Amsterdam
The Netherlands
+31 20 545 01 00

ortho.microport.com

Trademarks and registered marks of MicroPort Orthopedics Inc.
© 2018 MicroPort Orthopedics Inc. All Rights Reserved. 012588C